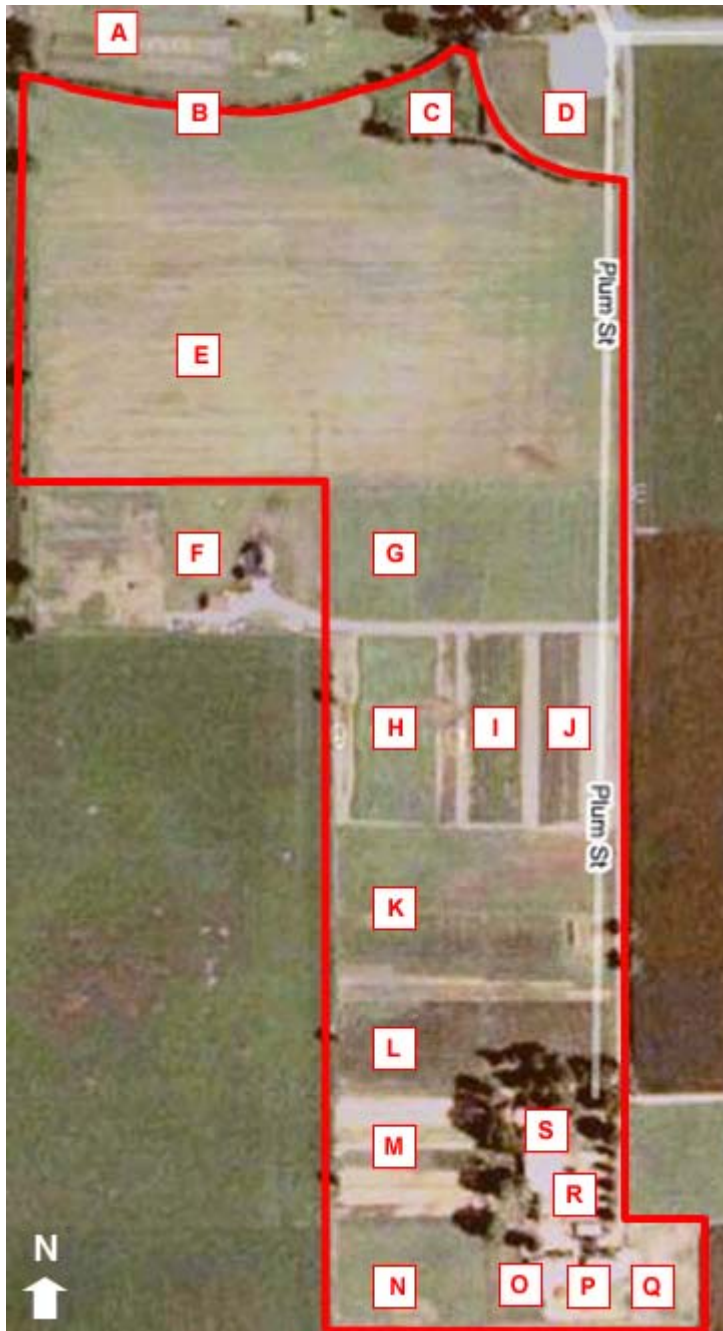


# The Pontious Farm Tour

## Birds-eye view

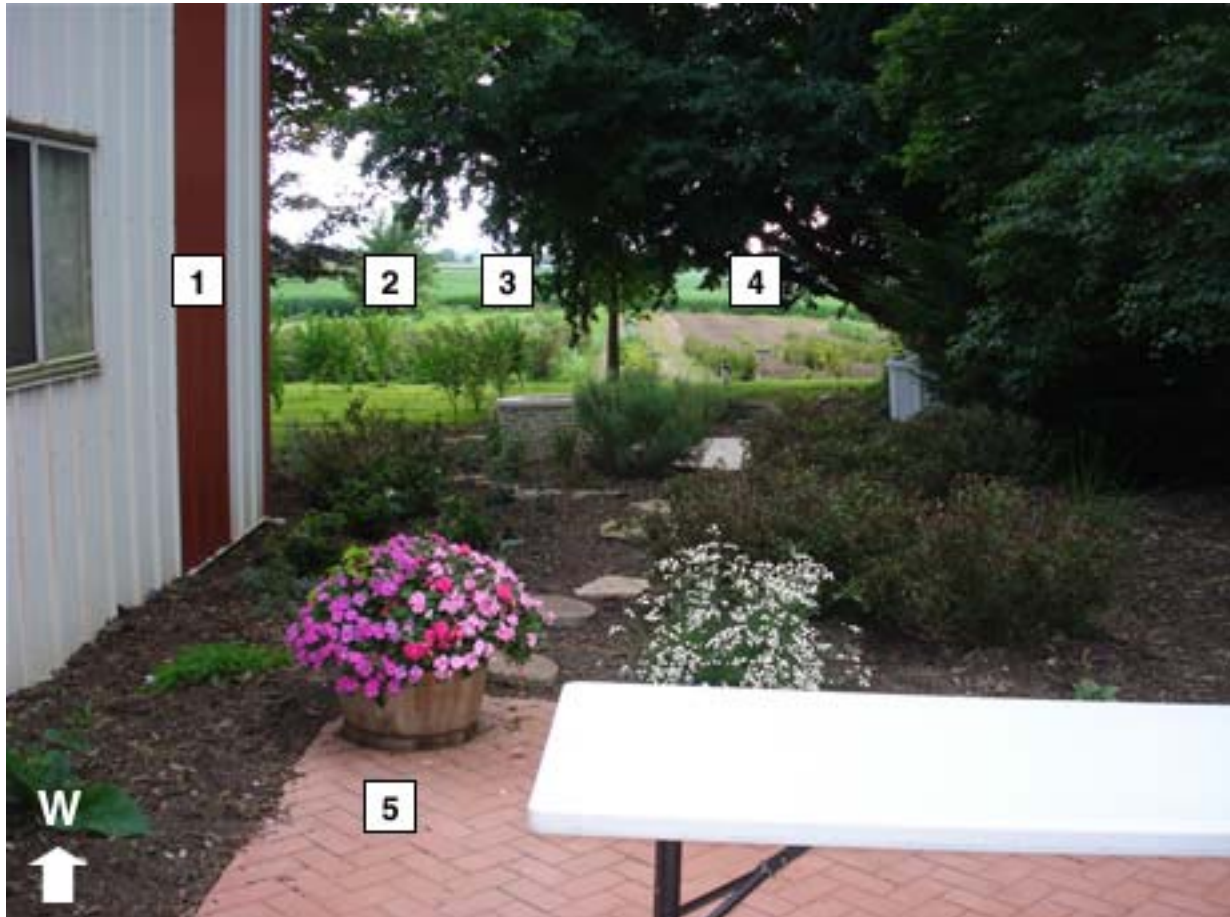


- A. Village of White Heath
- B. Creek
- C. Future home of the Piatt County Animal Shelter
- D. Ball field
- E. Large alfalfa hay field
- F. Family homestead
- G. North pasture
- H. Small alfalfa hay field
- I. Sweet corn
- J. Red raspberry field
- K. Small alfalfa hay field
- L. Main blueberry field
- M. Specialty berries, tomatoes, peppers, and other vegetables
- N. Clover/hay field
- O. West pasture and barn
- P. Corral and machine shed
- Q. East pasture
- R. Picking shed and herb garden
- S. Rick and Nancee's home

## Discover more U-PIK crops

### Cherries

The sour pie cherries from the dwarf cherry trees in the herb garden proved so popular that we planted a new dwarf cherry tree orchard in 2007.



1. Picking shed
2. Middle ground: New cherry orchard
3. Background: Small blueberry field
4. Jostaberries (cross between currants and gooseberries), currants, and gooseberries



1. West pasture
2. New cherry orchard
3. Clover/hay field
4. Picnic area

To the left: Picking shed



1. Picking shed
2. West pasture
3. New cherry orchard
4. Picnic area

To the right: Small blueberry field and specialty berries



1. Rick and Nancee's home
2. New cherry orchard

To the right: Small blueberry field and specialty berries

In the distance: Barn and west pasture



1. Picking shed
2. New cherry orchard



1. New cherry orchard

2. Picking shed

To the left: Small blueberry field

In the distance: Rick and Nancee's home

## Currants and Gooseberries

The gooseberries and black, red, and white currants we trialed in the herb garden proved so popular that we've been slowly adding bushes in the specialty berry garden.



1. Small blueberry field

2. Jostaberries (cross between currants and gooseberries), currants, and gooseberries

To the left: New cherry orchard

To the right: Rick and Nancee's home



1. Jostaberries (cross between currants and gooseberries), currants, and gooseberries

2. Tomatoes and peppers

To the left: New cherry orchard

To the right: Rick and Nancee's home



1. Small blueberry field
2. Jostaberries (cross between currants and gooseberries), currants, and gooseberries
3. Clover/hay field



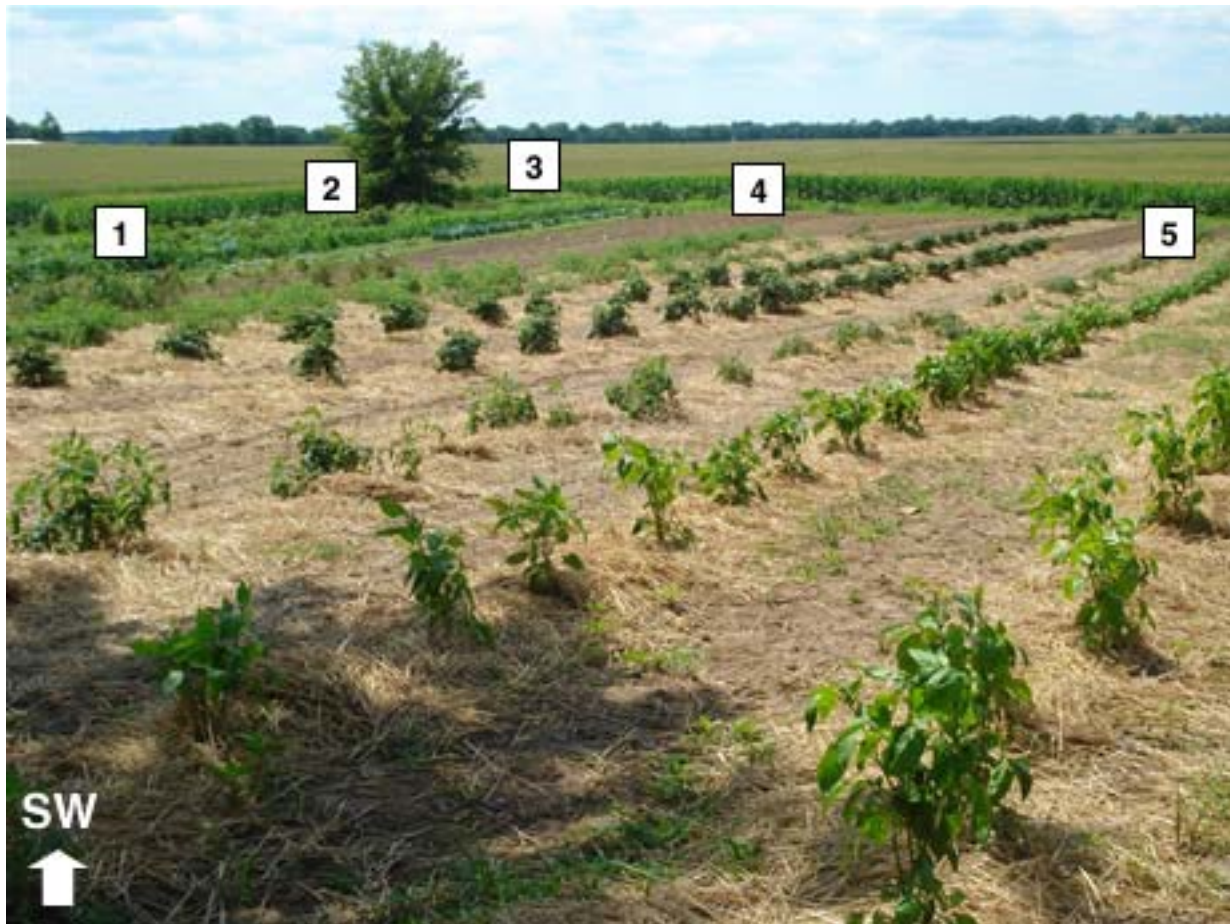
1. Jostaberries (cross between currants and gooseberries), currants, and gooseberries

2. Tomatoes and peppers

To the left: Small blueberry field

To the right: Main blueberry field

## Tomatoes and Peppers



1. Jostaberries (cross between currants and gooseberries), currants, and gooseberries
2. Small blueberry field
3. Zucchini, cucumber, and cabbage garden
4. Tomatoes
5. Peppers

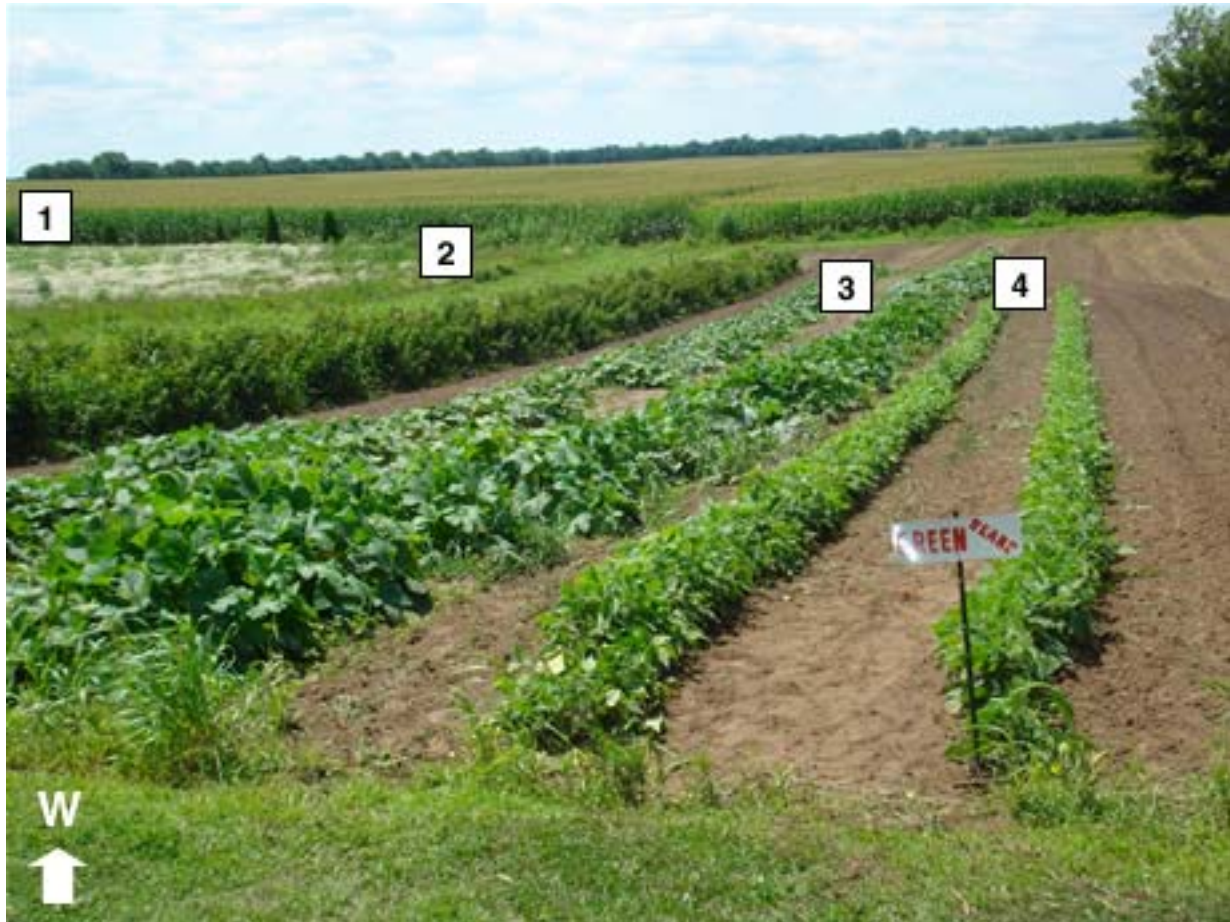
To the right: Main blueberry field



1. Rick and Nancee's home
2. Picking shed
3. Tomatoes and peppers
4. New cherry orchard
5. Jostaberries (cross between currants and gooseberries), currants, and gooseberries
6. Small blueberry field
7. Barn

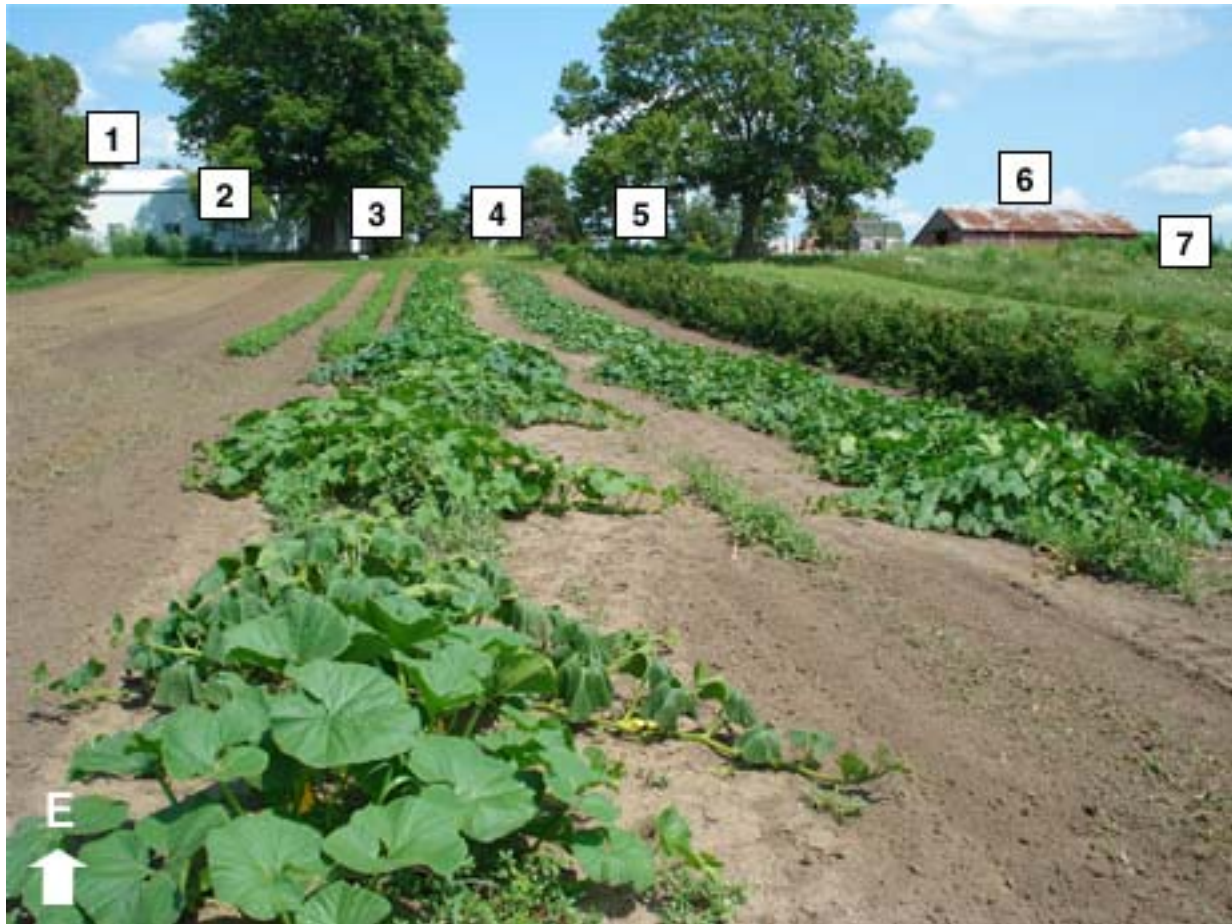
To the left: Main blueberry field

## Blackberries and Vegetables



1. Clover/hay field
2. Blackberries
3. Winter squash (butternut, acorn, spaghetti) and pumpkins
4. Green beans

To the right: Small blueberry field



1. Picking shed
2. New cherry orchard
3. Green beans
4. Winter squash (butternut, acorn, spaghetti) and pumpkins
5. Blackberries
6. Barn
7. Clover/hay field

To the left: Small blueberry field

Not to scale. For orientation only.

Blackberries: Prime Jan			
Blackberries: Prime Jim			
Squash: Waltham Butternut   Vegetable Spaghetti			
Squash: Early Acorn Hybrid		Pumpkins: Hercules   Big Max   Prizewinner Hybrid	
Green beans: Contender			
Vegetables: To be determined			
Blueberries			
Jostaberries	Zucchini: Dark   Bush	Cucumber: Muncher	Cabbage: Early Jersey Wakefield
Red Currants: Rovada   Jonkeer Van Tet	Cabbage: Red   Green	White Currants: Primus	
Black Currants: Consort   Crusader   Crandall			
Gooseberries: Red Hinnomaki   Pink Poorman   Pink Jahn's Prairie			
Gooseberries: Pink-Purple Pixwell   Purple Black Velvet   Green Invicta   Purple-Pink Captivator			
Tomatoes (Grape): Juliet			
Tomatoes (Roma): Big Mama			
Tomatoes (Large, slicing): Goliath			
Tomatoes (Large, slicing): Goliath			
Tomatoes (Large, slicing): Celebrity   Steak			
Peppers (Sweet bell): King North   Big Dipper   Super Heavy Weight   Colossal			
Peppers (Sweet bell): Golden Giant   Goliath		Peppers (Sweet banana): Whopper   Orangesicle	
Peppers (Medium hot): False Alarm Jalapeno   Garden Salsa			
Blueberries			